

MONTHLY MEMBERSHIP PROGRESS REPORT

LOCATION NEPAL

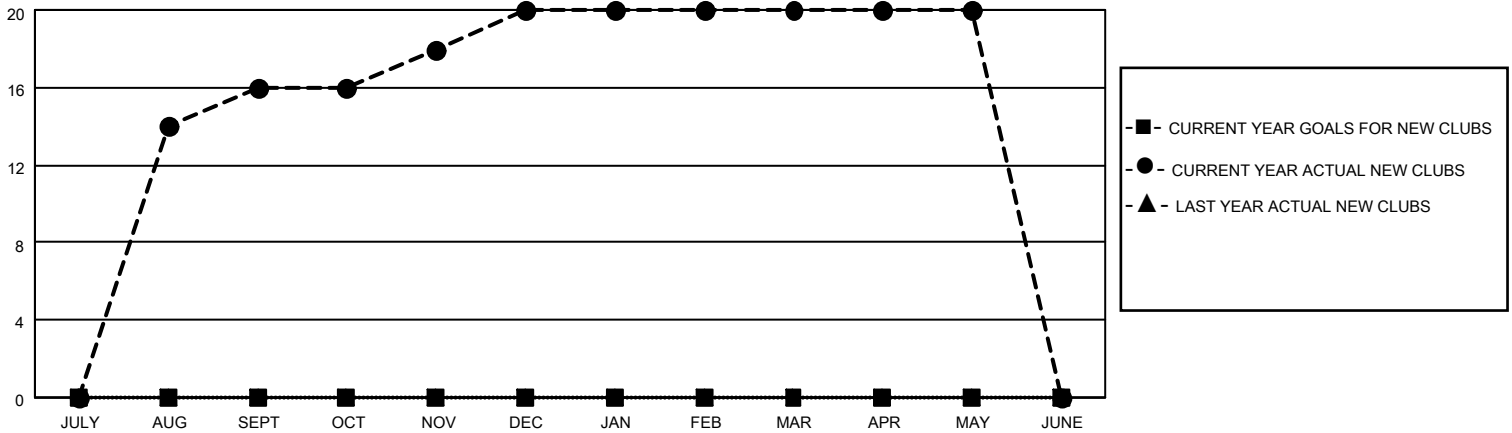
District 325 J

Results as of: 5/31/2023

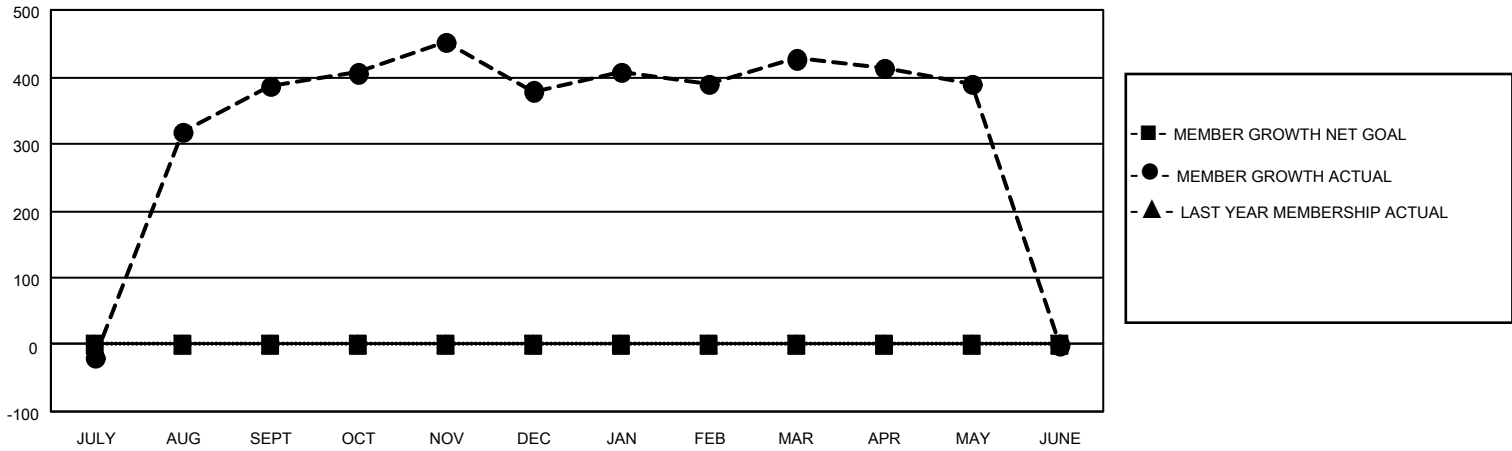
Clubs			
RESULTS FOR 2022-2023			
QUARTER	NEW CLUB GOAL	NEW CLUBS	DROPPED CLUBS
JULY/AUG/SEPT	0	16	1
OCT/NOV/DEC	0	4	5
JAN/FEB/MAR	0	0	1
APR/MAY/JUNE	0	0	0

Members			
RESULTS FOR 2022-2023			
QUARTER	MEMBER GROWTH NET GOAL	MEMBER GROWTH ACTUAL	DROPPED MEMBERS ACTUAL (including transfers)
JULY/AUG/SEPT	0	479	90
OCT/NOV/DEC	0	186	191
JAN/FEB/MAR	0	115	43
APR/MAY/JUNE	0	13	50

GOALS AND ACTUAL NEW CLUBS CUMULATIVE



GOALS AND ACTUAL MEMBERS CUMULATIVE



DROPPED CLUBS: 7

79 CLUBS OF 109 ADDED 1 OR MORE NEW MEMBERS

GENDER DISTRIBUTION

MALE	1,757 (69.86%)
FEMALE	758 (30.14%)
NON BINARY	0 (0.00%)
PREFER NOT TO ANSWER	0 (0.00%)

DROPPED MEMBERS

[CLICK HERE FOR CUMULATIVE MEMBERSHIP DATA](#)

DECEASED	0
CLUB CANCELLED	109
OTHER	265
TOTAL	374

TOTAL FAMILY UNIT MEMBERS 1,895

FAMILY MEMBERS PAYING HALF DUES 1,219